

220V Circulation Pump - Operating Conditions, Specifications & Warranty

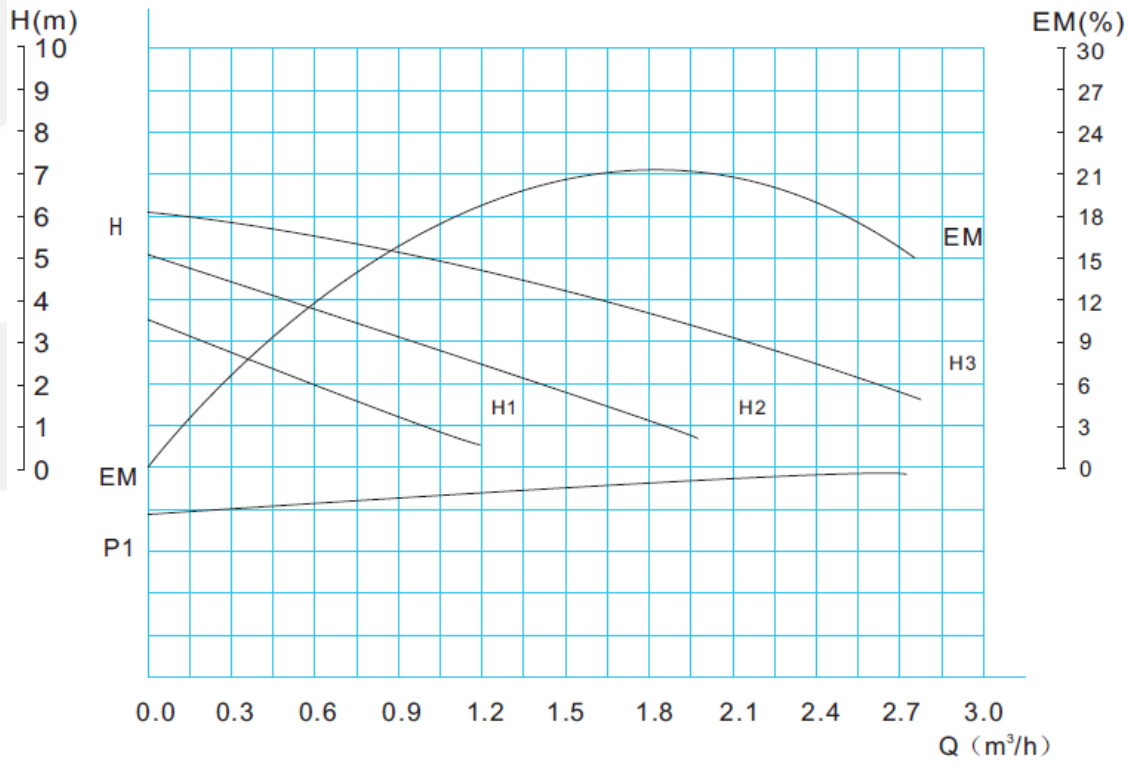
itsTM
solar



South Africa's leading **heat pump** & **solar water heating** supplier

Tel: 021 854 5290 | Fax: 086 505 0707 | Email: info@itsolar.co.za | Web: www.itsheatpump.co.za

RS12/6-130 RS 15/6-130



220V Circulation Pump - Operating Conditions, Specifications & Warranty



Operating Conditions:

The pump bearings are liquid cooled. Running the pump without water or in any event preventing water flow through the pump while in operation will cause damage.

The immediate surrounding area of the pump must be cooler than the liquid medium circulated through it. (See pictures 1 and 2)

Picture 1

Picture 2

t1 °C	2	40	60	80	90	100	105	110
t2 °C	0	40	60	80	70	60	55	35

t1 max: +110°C
t2 min: +2°C

The circulation pump must be installed in a horizontal position with the electrical connection being either on the sides or on top. (See pictures 3 and 4)

With the electrical connection, caution must be taken and should be done by a qualified electrician and according to SANS specification. (See pictures 5 and 6)

Picture 3

Picture 5

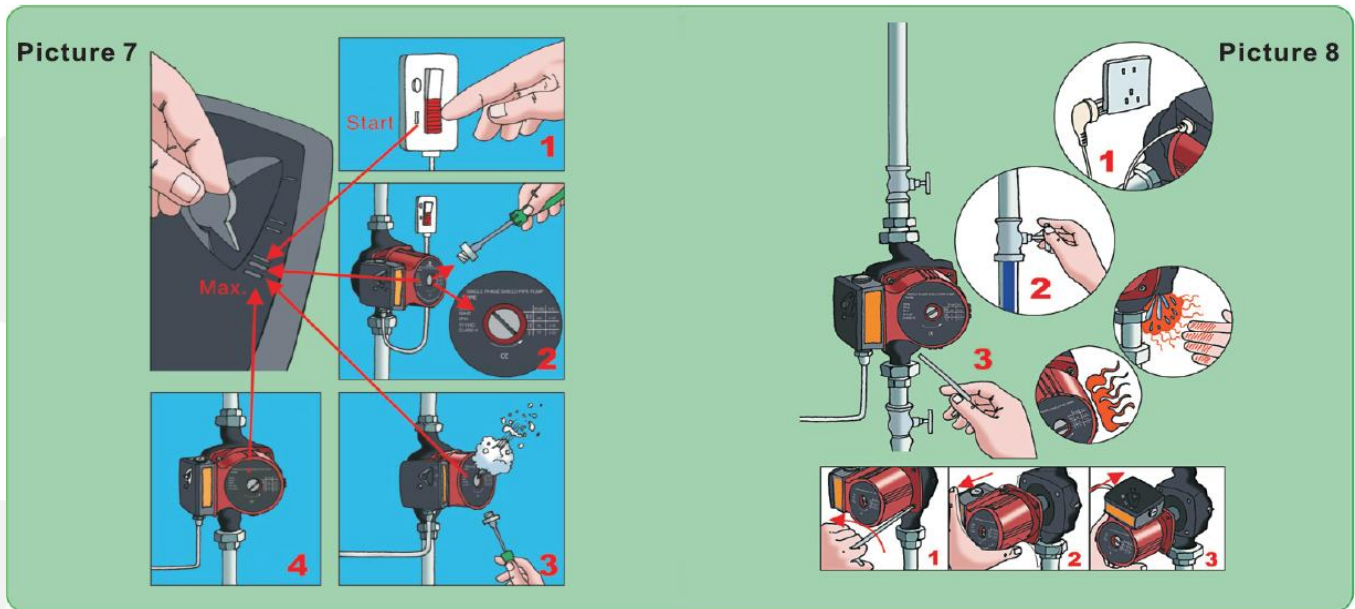
Picture 4

Picture 6

South Africa's leading **heat pump & solar water heating** supplier

Tel: 021 854 5290 | Fax: 086 505 0707 | Email: info@itsolar.co.za | Web: www.itsheatpump.co.za

After the circulation pump has been installed, ensure that all air has been bled from the pump prior to activating the pump. (Please see picture 7)



If the Circulation pump needs to be replaced, please ensure to follow all safety protocols. First deactivate the mains power supply to the circulation pump. Ensure that shut off valve at opposite end of the circulation pump has been shut off. Before holding the pump, first touch the pump to ensure it is not overheated – an overheated pump could cause scolding. Loosen and remove pump. (Please see picture 8)

Trouble shooting

<i>Problem</i>	<i>Possible cause</i>	<i>Possible solutions</i>
Circulation pump won't start up	Power supply is not connected - No power	Check Connection as well as supply
	Electric capacitor is damaged	Replace capacitor
	Rotating shaft is stuck	Loosen rotor with a screw driver at bleeding screw
	Impurity in the rotating shaft chamber	Disconnect pump, open chamber and clean
Noise from the circulation pump	Air in the system	Bleed air from the pump
	Impurities in the rotating chamber	Disconnect pump, open chamber and clean

220V Circulation Pump - Operating Conditions, Specifications & Warranty



Warranty Conditions:

The circulation pump carries a standard 12 month warranty from date of purchase. The warranty is a carry in warranty and is warranted to the original owner only. Should the item be considered faulty, the circulation pump must be returned to ITS Solar in original packaging for inspection. Only once an inspection on the pump has been completed, can the warranty procedure be completed.

All operating procedures must be adhered to. The circulation pump is IP44 rated and is not suited for external installation unless protected from all environmental conditions. The warranty will become null and void if not installed in the prescribed manner and must be installed with an ITS approved non return valve after the outlet of the pump.

Warranty Term:

The Warranty Term commences on the date of the customer's invoice and shall run for the full period specified. The warranty is limited to the original owner and is not transferable.

Exclusions:

The above mentioned Limited Warranty does not cover products damaged as a result of accident, abuse, misuse, improper installation or maintenance, or failure of piping or internal components due to freezing, rust, corrosion or scale build-up. The warranty is also rendered null and void should units leave South Africa unless prior approval is obtained from ITS Solar and Heat Pumps. Damage caused by failure to operate the circulation pump in accordance with ITS Solar and Heat pumps written instructions as well as damage caused by lightning, electrical surges, blown fuses, open circuit breakers, winds, corrosive environments or other.

South Africa's leading **heat pump** & **solar water heating** supplier

Tel: 021 854 5290 | Fax: 086 505 0707 | Email: info@itssolar.co.za | Web: www.itsheatpump.co.za